

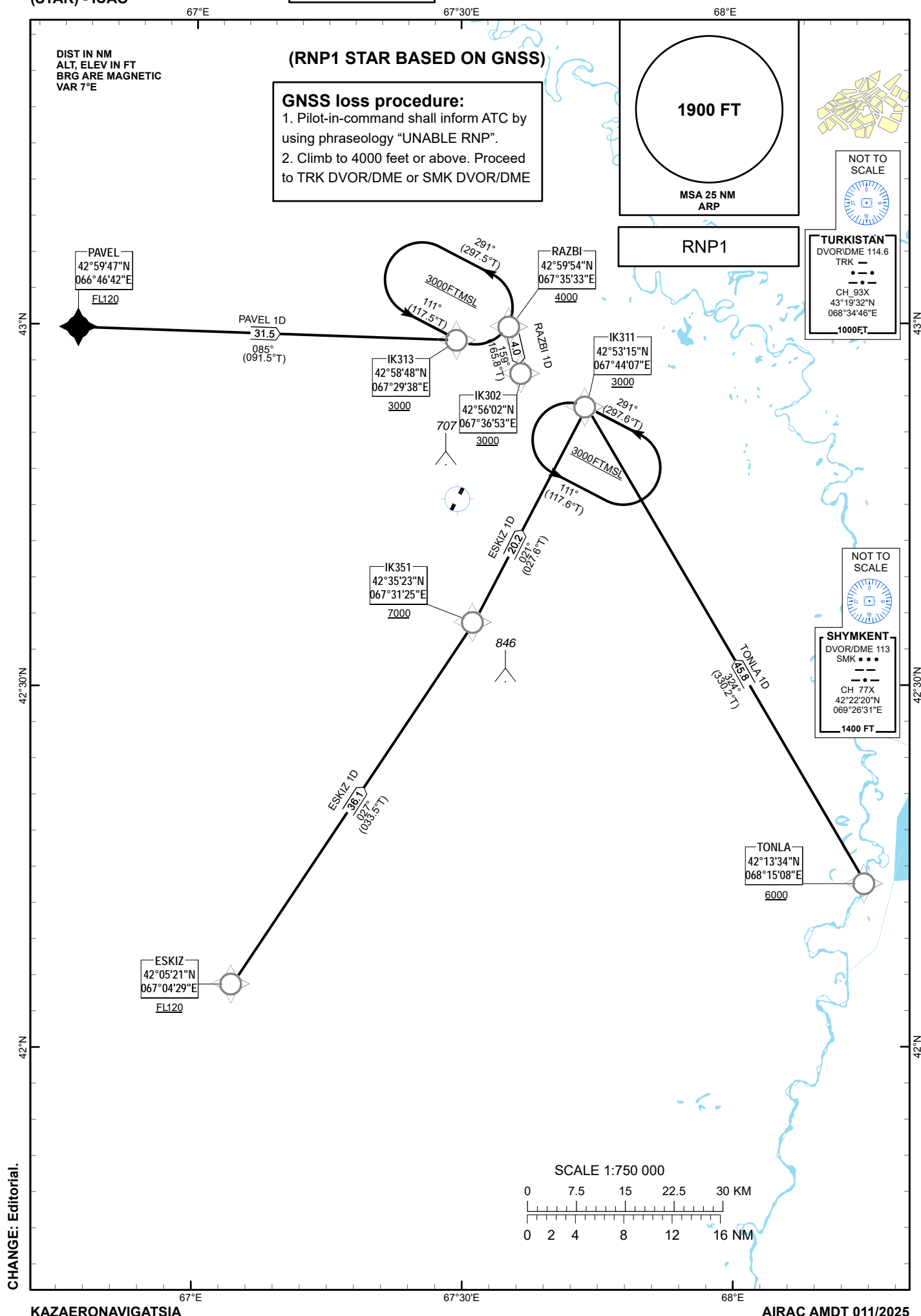
STANDARD ARRIVAL
CHART - INSTRUMENT
(STAR) - ICAO

TRANSITION ALTITUDE
10000 FT

TOWER FREQ
SEE NOTAM

ESKIZ 1D, PAVEL 1D,
RAZBI 1D, TONLA 1D

BOZHBAN
RWY 20L



**TABULAR
DESCRIPTION**

ESKIZ 1D RWY20L											
Serial Number	Path Descriptor	Waypoint Identifier	Fly - over	Course °M(°T)	Magnetic Variation(°)	Distance NM	Turn Direction	Altitude FT	Speed KT	VPA (°)	Navigation Specification
010	IF	ESKIZ	-		+6.54	-	-	+FL 120	-	-	RNP 1
020	TF	IK351	-	027(033.5)	+6.54	36.1	-	+7000	-	-	RNP 1
030	TF	IK311	-	021(027.6)	+6.54	20.2	L	+3000	-	-	RNP 1

**TABULAR
DESCRIPTION**

PAVEL 1D RWY20L											
Serial Number	Path Descriptor	Waypoint Identifier	Fly - over	Course °M(°T)	Magnetic Variation(°)	Distance NM	Turn Direction	Altitude FT	Speed KT	VPA (°)	Navigation Specification
010	IF	PAVEL	-		+6.54	-	-	+FL 120	-	-	RNP 1
020	TF	IK313	-	085(091.5)	+6.54	31.5	-	+3000	-	-	RNP 1

**TABULAR
DESCRIPTION**

RAZBI 1D RWY20L											
Serial Number	Path Descriptor	Waypoint Identifier	Fly - over	Course °M(°T)	Magnetic Variation(°)	Distance NM	Turn Direction	Altitude FT	Speed KT	VPA (°)	Navigation Specification
010	IF	RAZBI	-		+6.54	-	-	+4000	-	-	RNP 1
020	CF	IK302	-	159(165.8)	+6.54	4.0	-	+3000	-	-	RNP 1

**TABULAR
DESCRIPTION**

TONLA 1D RWY20L											
Serial Number	Path Descriptor	Waypoint Identifier	Fly - over	Course °M(°T)	Magnetic Variation(°)	Distance NM	Turn Direction	Altitude FT	Speed KT	VPA (°)	Navigation Specification
010	IF	TONLA	-		+6.54	-	-	+6000	-	-	RNP 1
020	TF	IK311	-	324(330.2)	+6.54	45.8	-	+3000	-	-	RNP 1

WAYPOINT COORDINATES

WPT	COORD		WPT	COORD	
ESKIZ	42°05'21.00"N	067°04'29.00"E	PAVEL	42°59'47.00"N	066°46'42.00"E
IK302	42°56'01.68"N	067°36'52.96"E	RAZBI	42°59'54.00"N	067°35'33.00"E
IK311	42°53'14.78"N	067°44'07.19"E	TONLA	42°13'34.00"N	068°15'08.00"E
IK313	42°58'48.11"N	067°29'38.09"E			
IK351	42°35'23.43"N	067°31'25.23"E			